

### Availability for shapes, couplings and product features

---

**PU-UF15** can be custom made in to almost any flexible sleeve and many other products.

This document summarizes all the different shapes, end couplings and product features that are available for this flexible material.

Please find detailed explanations on the information pages about these subjects:

- product features & options
- shapes & forms
- coupling ends

### Related Filcoflex Product Shapes & Forms

---

#### Rectangular – Rectangular

000 / 001 / 002 / 003 / 004  
005 / 006 / 006AC / 008



#### Rectangular - Round

051 / 052 / 053 / 054  
055 / 056 / 056AC / 058

#### Round – Round

550 / 551 / 552 / 553 / 554  
555 / 555 / 556AC / 558



#### Oval - Oval

660 / 661 / 662 / 663 / 664  
665 / 666 / 666AC / 668

#### Round - Oval

651 / 652 / 653 / 654  
655 / 656 / 656AC / 658

#### Y splitter / Side Branch

55Y5 / 00Y0 / 66Y6  
55Y0 / 55Y6 / 66Y0  
66Y5 / 00Y5 / 00Y6  
05Y0 / 05Y6 / 05Y5  
06Y0 / 06Y6 / 06Y5



#### Filcoflex B.V.

The Netherlands  
Luxemburgstraat 3  
5171 PK  
Kaatsheuvel

Website : [www.filcoflex.com](http://www.filcoflex.com)  
E-mail : [info@filcoflex.com](mailto:info@filcoflex.com)  
Telephone : +31 (0) 416 764 764  
Fax : +31 (0) 416 764 763

## Related Filcoflex Product Coupling Ends

### Jacob Flexible Connections

- FSC
- FDM



### Tri- Clamp Flexible Connections

- LFR
- LFRc
- LFDDC
- CFL
- TDP



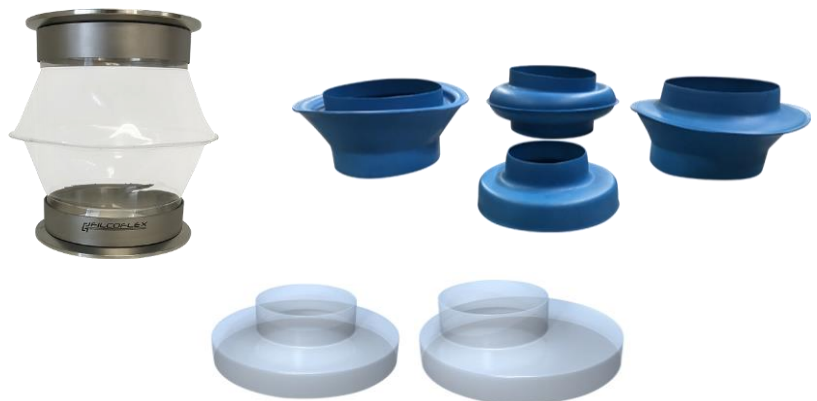
### Flexible Connectors

- Hose clamp Fitted
- Bolt Pattern Flange Fitted
- Harmonica Sleeves



### Weighing flexible connections

- Step Bellow PU
- Step Bellow PU super flexible  
3 part step bellow
- PU BG  
Poly Urethane Bellow
- PU BG CT  
Poly Urethane Bellow Corrugated Top
- PU BG CFT  
Poly Urethane Bellow Conical Bottom Flat Top
- PU BG AC  
Poly Urethane Bellow Asymmetrical Conical



### Related Filcoflex Product Coupling Ends

#### Hoses

- Poly Urethane Hose On Roll (HOR)



#### Inflatable Bulk Bag Clamps

- PBS-OT Pneumatic Bulk Bag Seal – Over Tube\*
- PBS-QD Pneumatic Bulk Bag Seal – Quick Detach\*



\*on special request

#### Seals, Gaskets and Covers

- Gasket cut from sheet
- Spray Shields
- Cut sheets or patterns
- Custom protective covers
- Cable Covers
- Wall seals
- Closed end or Bottom Bag
- Endcap or Cap



### Related Filcoflex Product Features & Options

#### Integrated Reinforcement rings

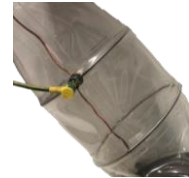
to withstand vacuum collapse or over pressure expansion.

- Stainless Steel, 3mm / 5mm / 8mm (VR)
- PE 6x10mm poly ethylene (VRPE)
- Stainless Steel T bar 20x25x3 (VRT)
- Coated Woven Fabric Band (VRF)



#### Earth / Ground

- Earth connection on integrated Flanges with M6 Stud or Nut (A)
- Earth connection on integrated rings with M6 Stud or Nut (VRA)
- Earth connection stud welded on metal parts M6/M8 (A)



#### Sleeve within a Sleeve

- Inside Cone / Inside Sleeve (7)

#### Padding on Flange or Cuff

- Stitched on gasket on bolt pattern flanges (VF)
- Stitched on gasket on end cuffs (VF)



#### Double Wall Flexible

- Double layer flexible sleeve body (6)

#### Label

- NFC chip encased in Poly Urethane pocket
- Printed label encased in Poly Urethane pocket  
Can contain customized Text, Bar code, QR code  
3 optional colors (yellow/blue/white)
- RFID chip encased in Poly Urethane pocket



#### Pneumatic / Compressed Air Hoses

- TPU compressed air hoses 8x5,5mm welded in.\*

\*on special request



#### Embossing

- Embossed logo or marking welded in thermoplastic material



#### Filcoflex B.V.

The Netherlands  
Luxemburgstraat 3  
5171 PK  
Kaatsheuvel

Website : [www.filcoflex.com](http://www.filcoflex.com)  
E-mail : [info@filcoflex.com](mailto:info@filcoflex.com)  
Telephone : +31 (0) 416 764 764  
Fax : +31 (0) 416 764 763