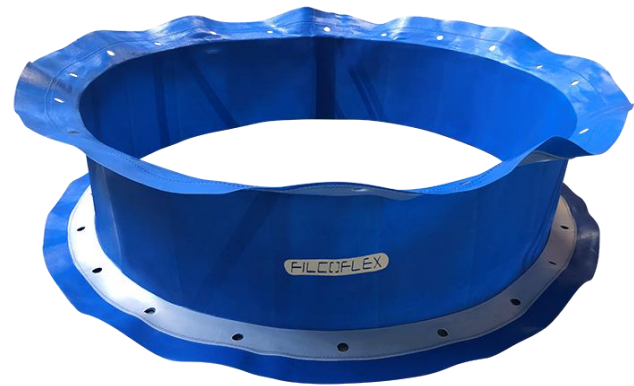


### Food Contact Compliancy

Filcoflex B.V. hereby declares that below mentioned list (1) of PTFE Cross Laminated Films comply with the following regulations (2) for repetitive contact with food and foodstuffs.

#### PTFE Cross Laminated Films (1):

- PTFE 2105
- PTFE 2109 Blue/Gray
- PTFE 2110
- PTFE 2112 AS Black
- PTFE 2120 AS Black
- PTFE 2120 Translucent
- PTFE 2130 Blue
- PTFE 2140
- PTFE 2150
- PTFE 2160



#### List of regulations to which the product complies (2)

##### FDA 21 CFR of the United States of America:

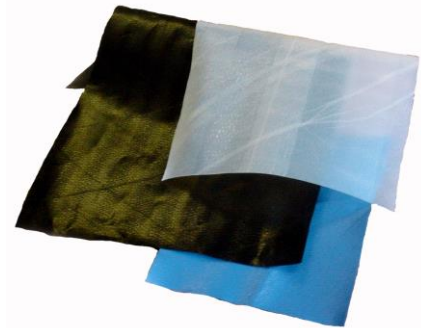
- 177.1550
- 177.3297

##### European Union :

- (EC) 1935/2004
- (EC) 10/2011
- (EC) 2003/11
- (EC) 2005/59

##### Other regulations :

- REACH (SVHC)
- ROHS



#### Free of substances

None of the following chemicals is intentionally added to PTFE cross Laminated Films, and are there for suspected to not be present in the PTFE material.

- Polyvinyl Chloride (PVC)
- Phthalates
- Melamine
- Silicone
- Latex
- BSE / TSE
- Animal Derived Ingredients (Blood, carrion, pork, animal slaughtered without mentioning the name of Allah/God, wild animal/carnivore, animal with sharp teeth and claws, amphibia)
- Khamr
- Part of Human body
- Peanuts and products thereof

#### Migration Testing Reports

No migration testing reports are available at this moment

#### Filcoflex B.V.

The Netherlands  
Luxemburgstraat 3  
5171 PK  
Kaatsheuvel

Website : [www.filcoflex.com](http://www.filcoflex.com)  
E-mail : [info@filcoflex.com](mailto:info@filcoflex.com)  
Telephone : +31 (0) 416 764 764  
Fax : +31 (0) 416 764 763